



DIXONS  
SIXTH FORM  
ACADEMY

# SUMMER WORK

**BTEC HEALTH &  
SOCIAL CARE  
DIPLOMA**

STUDENT NAME:

20  
25

# Contents

About the Summer Work..... 2

Welcome to Health & Social Care Extended Certificate ..... 3

Subject outline (including a summary of assessment)..... 3

Careers & Higher Education ..... 5

Links to key information ..... 6



# About the Summer Work

This booklet contains a number of tasks that students are expected to complete to a good standard in order to be able to be enrolled in this subject.

Information about how you would like the summer work to be completed on A4 paper and brought to first lesson,

The work handed in should be:

- written in black or blue ink on A4 lined paper
- written in full sentences with no copying and pasting from external sources
- have all compulsory tasks completed
- have student's full names on each sheet
- multiple sheet should be connected together



# Welcome to Health & Social Care Extended Certificate

## Subject outline

### What does it mean to study Health & Social Care?

A true love of Health and Social Care involves learning about the domain Health and Social Care. We teach beyond the specification requirements, but do ensure students are well prepared to be successful in their qualifications.

### What does an excellent student of Health & Social Care look like?

#### 1. Strong Understanding of Core Concepts

Can confidently explain key theories (e.g. Maslow, Bowlby, Piaget).

Applies knowledge to real-world case studies effectively.

Makes clear links between legislation, policy, and practice (e.g. Equality Act, safeguarding protocols).

#### 2. Excellent Work Ethic and Organisation

Meets deadlines consistently and submits well-structured, thorough work.

Maintains organised folders/portfolios with clear evidence of learning and progress.

Seeks and acts on feedback to improve performance.

#### 3. Reflective and Empathetic

Reflects thoughtfully on their own values, behaviours, and attitudes in relation to care.

Shows genuine empathy and understanding of the needs of different individuals.

Uses inclusive and person-centred language in discussion and coursework.

#### 4. Communication and Teamwork

Participates meaningfully in class discussions and group work.

Can adapt communication to suit different audiences (e.g. children, elderly, professionals).

Demonstrates leadership when appropriate and supports others respectfully.

#### 5. Professionalism and Integrity

Demonstrates mature, respectful behaviour in class and during placements.

Upholds confidentiality and ethical principles during discussions and case study analysis.

Understands and values diversity, equality, and anti-discriminatory practice.

#### 6. Proactive Engagement

Engages in enrichment activities (e.g. work placements, volunteering, college events).

Keeps up with current issues in health and social care (e.g. NHS news, care sector changes).

Aspires to progress into a relevant career (e.g. nursing, social work, midwifery) and takes steps towards that goal.



How does your subject relate to the us in the year 2025?

What core skills or attributes will your subject develop?

Cognitive and problem-solving skills: use critical thinking, approach non-routine problems applying expert and creative solutions, use systems and technology.

- Intrapersonal skills: communicating, working collaboratively, negotiating and influencing, self-presentation.
- Interpersonal skills: self-management, adaptability and resilience, self-monitoring and development.

What sort of work will students be expected to do outside of lesson time?

Our belief is that homework should include deliberate practice of what has been modelled and taught in lessons, as well as spaced revision to ensure students are developing high level skills with precise knowledge and informed understanding of Health and social care. In addition, students are empowered to extend content that teachers have introduced, in order to achieve subject mastery.

- -Coursework
- -Researching topics in Health & social care
- -Responding back to feedback to assessments
- Revision pack
- Knowledge booklet



### How will the course be assessed?

The unit is split into 4 units:

Year 1:

UNIT 1 Human life span development (MANDATORY) External (Exam)
UNIT 2 Working in Health & Social Care (MANDATORY) External (Exam)

Year 2:

UNIT 5 Meeting individual's care and support needs (MANDATORY) Internal (Course work)
UNIT 14 Physiological disorders and their care (OPTIONAL) Internal (Course work)

### Exam Requirements

Exam Board: Pearson Edexcel	Unit 1 Human life span development	Unit 2 Working in Health & Social Care
Exam Code	31490H	31491H
Percentage of A level	25%	33%
Marks available	90 marks (24 UMS)	80 marks (32 UMS)
Exam Date	Jan 2026	May 2026

### **Assessment:**

**Unit 1** Human life span development -Written exam set and marked by Pearson. (1.5 hours).

**Unit 2** Working in Health & Social Care - Written exam set and marked by Pearson. (1.5 hours).

**Careers & Higher Education**

What degrees are linked to Health & Social Care

- Adult Nursing BSc (Hons)
  - Children's Nursing BSc (Hons)
  - Healthcare Practice BSc (Hons)
  - Learning Disabilities Nursing BSc (Hons)
  - Mental Health Nursing BSc (Hons)
  - Midwifery with Registered Midwife BMid (Hons)
  - Midwifery with Registered Midwife BMid (Hons) for Registered Nurses (Adult)
  - Nursing Associate FdSc
  - Nutrition (Exercise and Health) BSc (Hons)
  - Nutrition (Human Nutrition) BSc (Hons)
  - Social Work BA (Hons)
  - Working with Children & Young People: Social Pedagogy BA (Hons)
  - Occupational therapist
- 

**What careers can lead from studying this subject or gaining this qualification?**

- Occupational therapist.
- Care worker
- Rehab worker
- Counsellor
- Social worker
- Health visitor
- Paramedics
- Nursing

**For what jobs is this qualification essential?**

- Primary care services
- Domiciliary care
- Residential care homes
- Day services
- Assisting supported living

How does Health & Social Care link with the local labour markets in Bradford? - \_\_\_\_\_



SCAN ME



SCAN ME

Where could you look for further career options?



SCAN ME





Specification:





# Summer work tasks

**Task 1: essential task – knowledge building**

**Human life span**

**Identify & describe the 6 life stages**

**Describe the developmental changes that would occur for each life stage in terms of physical, intellectual, emotional, and social.**



1. ....

2. ....

3. ....

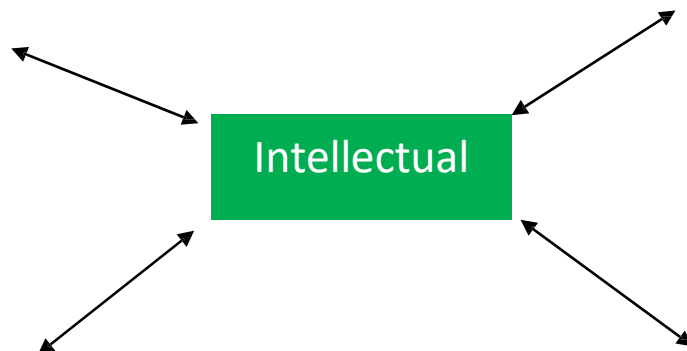
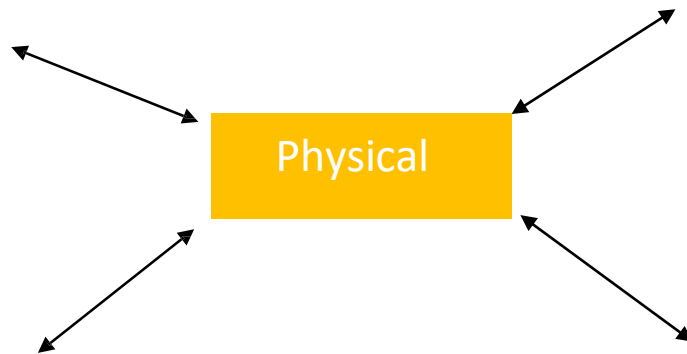
4. ....

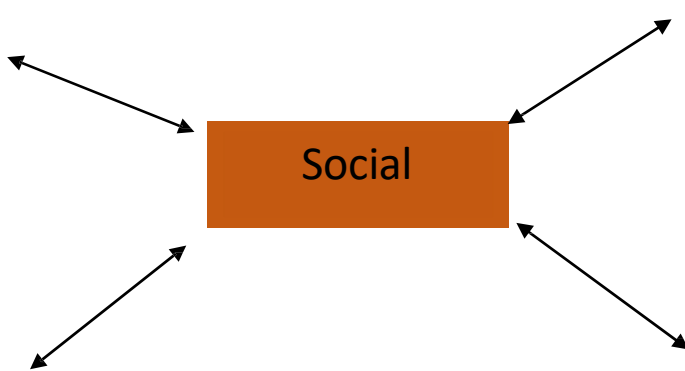
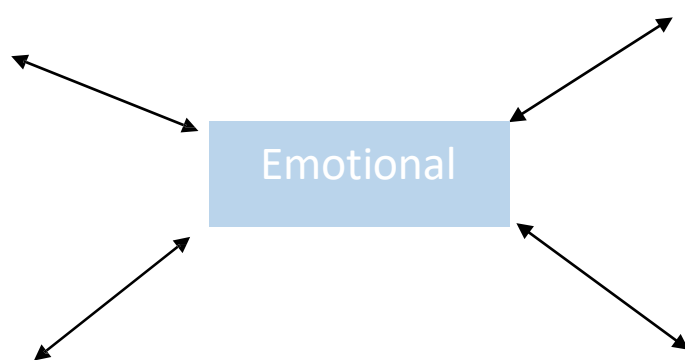
5. ....

6. ....

**Task 2**

Complete the mind maps of what is involved in physical, intellectual, emotional, and social development.







**Task 3**

**Research important cases in H&Sc Create a short summary on the cases**

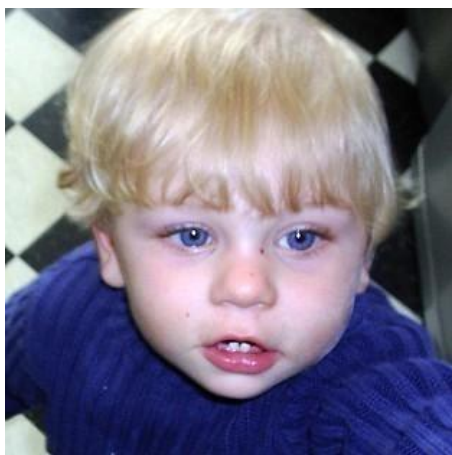
**The following YouTube links will help you gain a stronger insight**

**Staffordshire hospital :**

**Winterbourne view :**

**Baby Peter :**

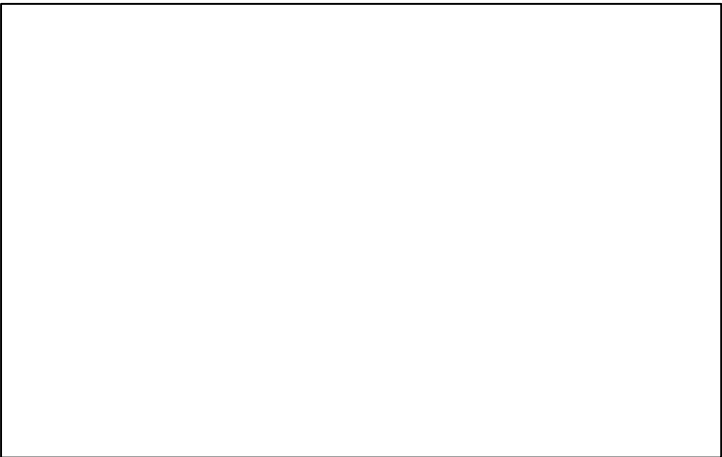
**Vitoria Climbié : Baby Peter**



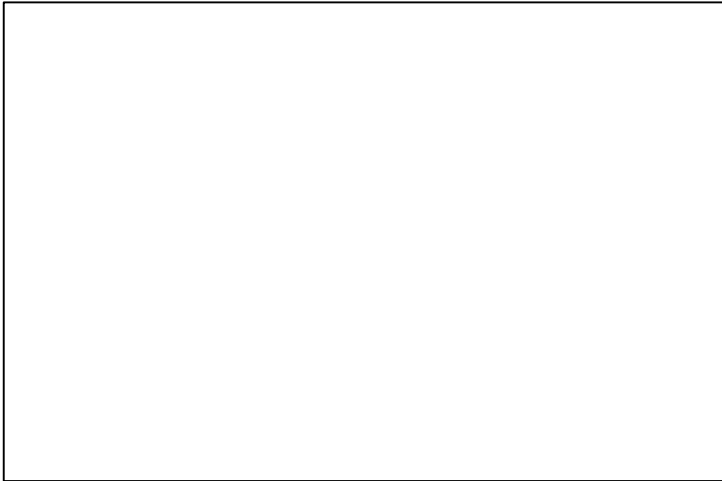
**Vitoria Climbié**



Staffordshire hospital



Winterbourne View



# Reading list

